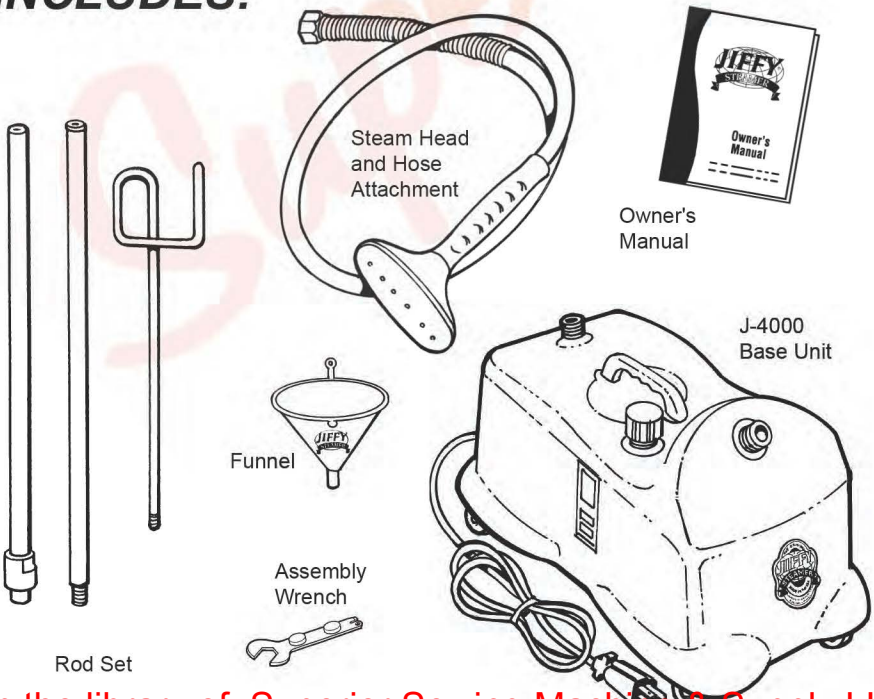


Jiffy® J-4000 Model Steamer

FEATURES

- Built-in, easy-to-read sight gauge also indicates sediment build-up
- Cast aluminum housing unit for durability
- Corrosion-proof stainless steel boiler tank--no water lines to become clogged with hard water deposits
- Dual thermostats for preheat and steam settings.
- Safety wiring feature temporarily turns the unit off should it accidentally run dry
- Numerous steam head attachments available
- Backed by Jiffy®'s renowned customer service--*should your steamer need repair, send it to us and we will repair and ship the unit within 24 hours from its arrival to our plant*

INCLUDES:



Jiffy® J-4000 Directions

1. Attach hose firmly with included assembly wrench, which is magnetized and located on the bottom of the unit (figure #1). Assemble and attach hose hanger rod set (figure #2). See page 9 for assembly instructions.



Figure 1

2. Using supplied funnel, add a maximum of four quarts of warm (fresh tap or distilled) water (cold water takes longer to preheat). Do not overfill. Plug into proper voltage outlet, turn switch to "PREHEAT". Steamer will hold at this temperature, and the light will go off and on occasionally. **NOTE:** The J-4000 Steamer contains a large water reservoir for 2 hours of continuous steaming. Leave the switch in the "PREHEAT" position (figure #3) if you plan to use your steamer throughout the day. This will maintain water temperature in the reservoir.



Figure 2

3. Immediately after water is preheated, turn switch to "STEAM" position for steam in approximately 2 minutes. The combined touch of the steaming head and the direct steam is very important. Some articles can be steamed better from the underneath side. Always steam with hose in upright position so any condensation is free to flow back into steamer. If steaming in a low position near floor, straighten hose up and out frequently to keep clear of condensation. If steamer runs dry it will



Figure 3

temporarily shut off. Once finished using the unit, turn the switch to the "OFF" position. If more water needs to be added to the steamer, allow steamer to cool before removing fill cap and adding more water. Never pour cold water on a hot element. Resume steaming by resetting the switch to the "STEAM" position.

4. Hang steam head and hose in upright position in the hose hanger section when not in use (figure #4) and turn switch to the "OFF" position (figure #3).



Figure 4

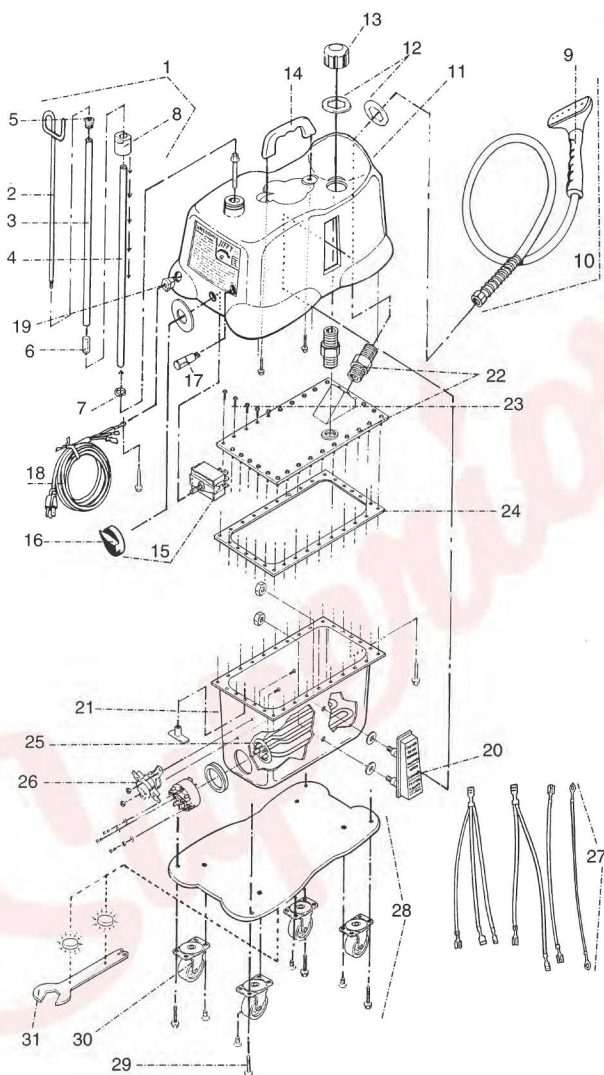
5. Periodically, pour old water out of steamer to avoid sediment build up and maintain proper water level. Never have more than 4 quarts of water in steamer. If overfilled, water will boil up into hose. The Jiffy® Liquid Cleaner is recommended every 6 months to flush mineral deposits. See page 29 for complete cleaning instructions.

WARNING: Never operate without water. Unplug after each use for added safety.

From the library of: Superior Sewing Machine & Supply LLC

J-4000

Jiffy® J-4000 Parts Diagram



Should you ever need replacement parts for your Jiffy® Steamer, you may purchase them separately. Use this handy diagram and parts list to identify any part you may need. Please include model and serial number when ordering.

Jiffy Steamer			List Price
Key#	Part #	Part Description	
1	1030	Rod Set and Nut Complete with Metal Studs	\$ 25.50
	1034	Rod Set and Nut Complete for Drapery Steamers	\$ 29.00
2	0035	Hook Section of Rod Set	\$ 6.50

From the library of: **Superior Sewing Machine & Supply LLC**

Jiffy® J-4000 Parts Diagram Key

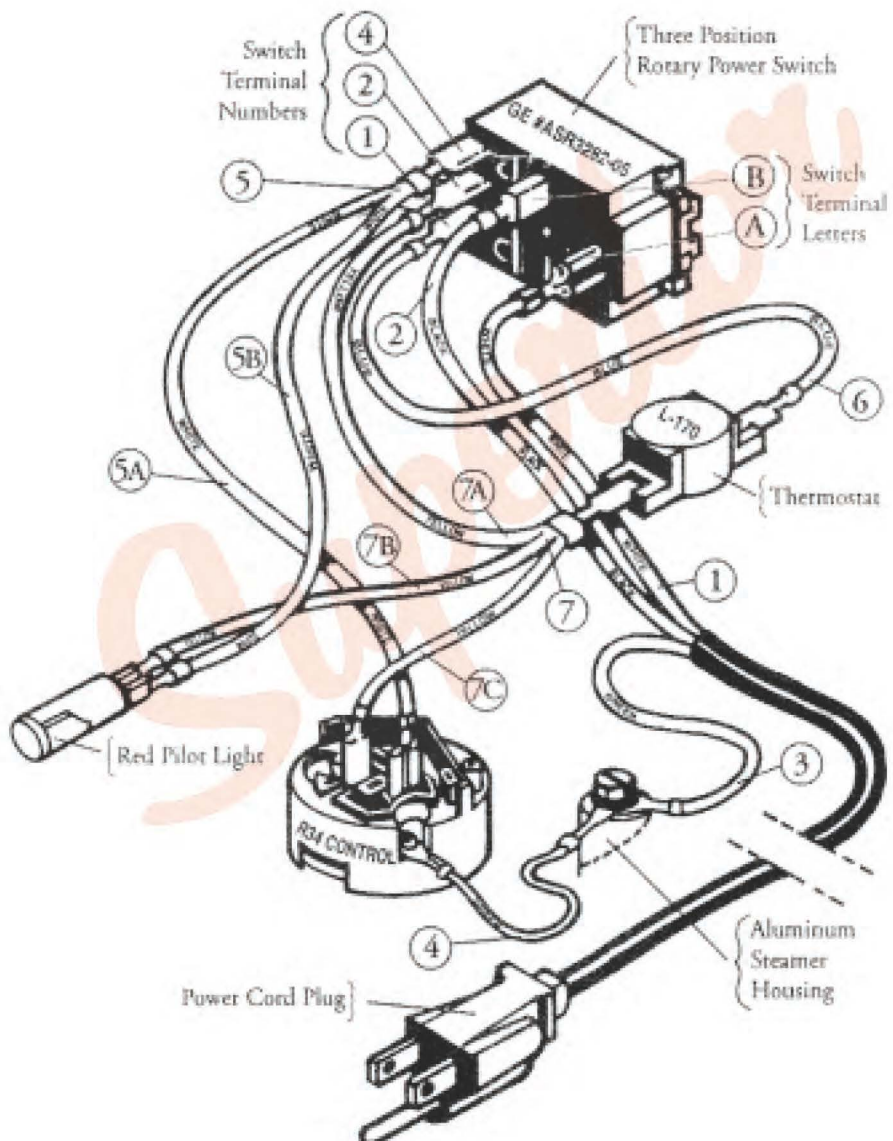
3	0036	Middle Section of Rod Set (with Barrel Stud and Cap Screw)	\$ 7.50
4	0037	Bottom Section of Rod Set	\$ 7.50
	0038	Additional Middle Section of Rod Set for Drapery Steamers	\$ 7.50
5	0043	Metal Threaded Cap Screw for Rod Set	\$ 1.50
6	0039	Metal Threaded Stud for Rod Sections	\$ 1.50
7	1031	1/2" Split Ring for Rod Set	\$ 0.50
8	1032	Rod Set Nut	\$ 6.00
9	0253	Plastic Steam Head/Handle Replacement Kit	\$ 22.00
10	0251	Plastic Head/Handle Hose Attachment Complete	\$ 50.00
	0280	Hose Per Foot (Black in Color)	\$ 3.00
11	1301	J-4000 Die Cast Aluminum Housing	\$ 72.00
12	0006	Hex Beauty Rings (Set of 2)	\$ 1.50
13	0049	Water Fill Cap	\$ 6.50
	0053	Funnel	\$ 3.50
14	0054	Housing Handle with Two Screws	\$ 7.00
15	0199	Rotary Power Switch and Knob	\$ 12.00
16	0201	Replacement Knob Only for Rotary Power Switch	\$ 1.50
17	1310	Red Neon Pilot Light (120 VOLT)	\$ 4.50
	1311	Red Neon Pilot Light (230 VOLT)	\$ 4.50
18	0133	Cord Set (14/3 gauge) with Strain Relief	\$ 9.50
19	0146C	Cord Strain Relief	\$ 1.50
20	0050	Water Level Sight Gauge with Nuts and Washers	\$ 32.00
	1353	Stainless Steel Boiler Tank Kit Complete (120 Volt)	\$ 155.00
	1354	Stainless Steel Boiler Tank Kit Complete (230 Volt)	\$ 155.00
21	1374	Stainless Steel Boiler Tank with Sight Gauge (J-4000)	\$ 78.00
	0074	Stainless Steel Boiler Tank with Sight Gauge (J-3)	\$ 46.00
	0074A	Stainless Steel Boiler Tank with Sight Gauge (J-4)	\$ 78.00
22	0058	Boiler Tank Lid with 2 Brass Fittings and 2 Beauty Rings	\$ 28.00
23	0071	Boiler Tank Screw Set (Set of 30 + 1 Tee Nut)	\$ 6.00
	0061	Boiler Tank Silicone Sealer (2.8 Fluid Ounces)	\$ 4.50
	0062	Boiler Tank Silicone Sealer (10.1 Fluid Ounces)	\$ 8.00
24	0075	Boiler Tank Gasket	\$ 8.50
25	1355	Heating Element (120 Volt, 1500 Watt)	\$ 28.00
	1356	Heating Element (230 Volt, 1500 Watt)	\$ 28.00
	1350	Heating Element (120 Volt, 1500 Watt) & Control Kit Complete	\$ 46.00
	1351	Heating Element (230 Volt, 1500 Watt) & Control Kit Complete	\$ 46.00
	1352	Control Kit with Seal and Hardware	\$ 18.00
	1362	Hardware Kit for J-4000 Control	\$ 1.50
26	0203	Preheat Thermostat (L-170)	\$ 8.00
27	1314	Internal Wire Set (Set of 4 Wires)	\$ 8.00
28	1320	Bottom Plate with Four Casters	\$ 18.00
29	0017	Bottom Plate Screws (Set of 4)	\$ 0.75
30	0018	Bottom Plate Casters (Set of 4)	\$ 6.50
ACCESSORIES			
31	1050	Jiffy Steamer Assembly Wrench	\$ 4.00
	0259	Auto Hose Attachment with Dual Metal Heads	\$ 82.00
	0257	Carpet Hose Attachment with 12" wide Metal Head	\$ 75.00
	0252	7.5' Drapery Hose Attachment with Plastic Steam Head	\$ 56.00
	0255	7.5' Drapery Hose Attachment with Metal Steam Head	\$ 76.00
	0254	Metal Head / Wood Handle Hose Attachment Complete	\$ 70.00
	0256	Metal Head / Wood Handle Only	\$ 37.50
	0269	Replacement Wooden Handle (for Metal Steam Heads)	\$ 7.00
	0262	Wig Hose Attachment	\$ 50.00
	0274	Brass Hat Nozzle Attachment	\$ 13.00
	1062	Steam Cleaning "B" Brush Hose Attachment	\$ 50.00
	1063	Brush Only for the "B" Hose Attachment	\$ 8.00
	0898	Liquid Cleaner - 3 Ten (10) Ounce Bottles per Package*	\$ 15.00

*Not Available for Export.

Jiffy® J-4000 Wiring Diagram

Caution:

Insure that the power cord is unplugged from the electrical outlet before attempting to repair your Jiffy® Steamer.



Jiffy® J-4000 Wiring Instructions

Please note, the switch terminal numbers and the switch terminal letters are marked on the actual switch.

1. Neutral wire #1 (white wire from the cord set bundle) attaches to “A” marked on the GE #ASR3282-05 rotary power switch.
2. Positive wire #2 (black wire from cord set bundle) attaches to “B” marked on the GE #ASR3282-05 rotary power switch.
3. Ground wire #3 (green wire from cord set bundle) attaches to the aluminum steamer housing.
4. Ground wire #4 (green wire from electrical control) attaches to the aluminum steamer housing.
5. The double white wire #5 connects from switch terminal number 4 as follows:
 - The 5A leg of the double white wire #5 connects to the terminal pin on the right side of the R34 electrical control, which is the one nearest to the ground wire.
 - The 5B leg of the double white wire #5 connects to either side of the red pilot light.
6. Blue wire #6 connects switch terminal number 1 to the top side of the L-170 PREHEAT thermostat.
7. Triple yellow wire #7 connects from the bottom side of the L170 PREHEAT thermostat as follows:
 - The 7A leg of the triple yellow wire #7 goes to switch terminal number 2.
 - The 7B leg of the triple yellow wire #7 goes to the red pilot light.
 - The 7C leg of the triple yellow wire #7 goes to the left side of the R34 electrical control.

J-4000